

Evans Model 4253

Index Table



Operations Manual

April 2008



EVANS MACHINERY, INC.

5530 N. 51ST AVENUE, GLENDALE, ARIZONA 85301

PO BOX 1406 85311

www.evansmachineryinc.com

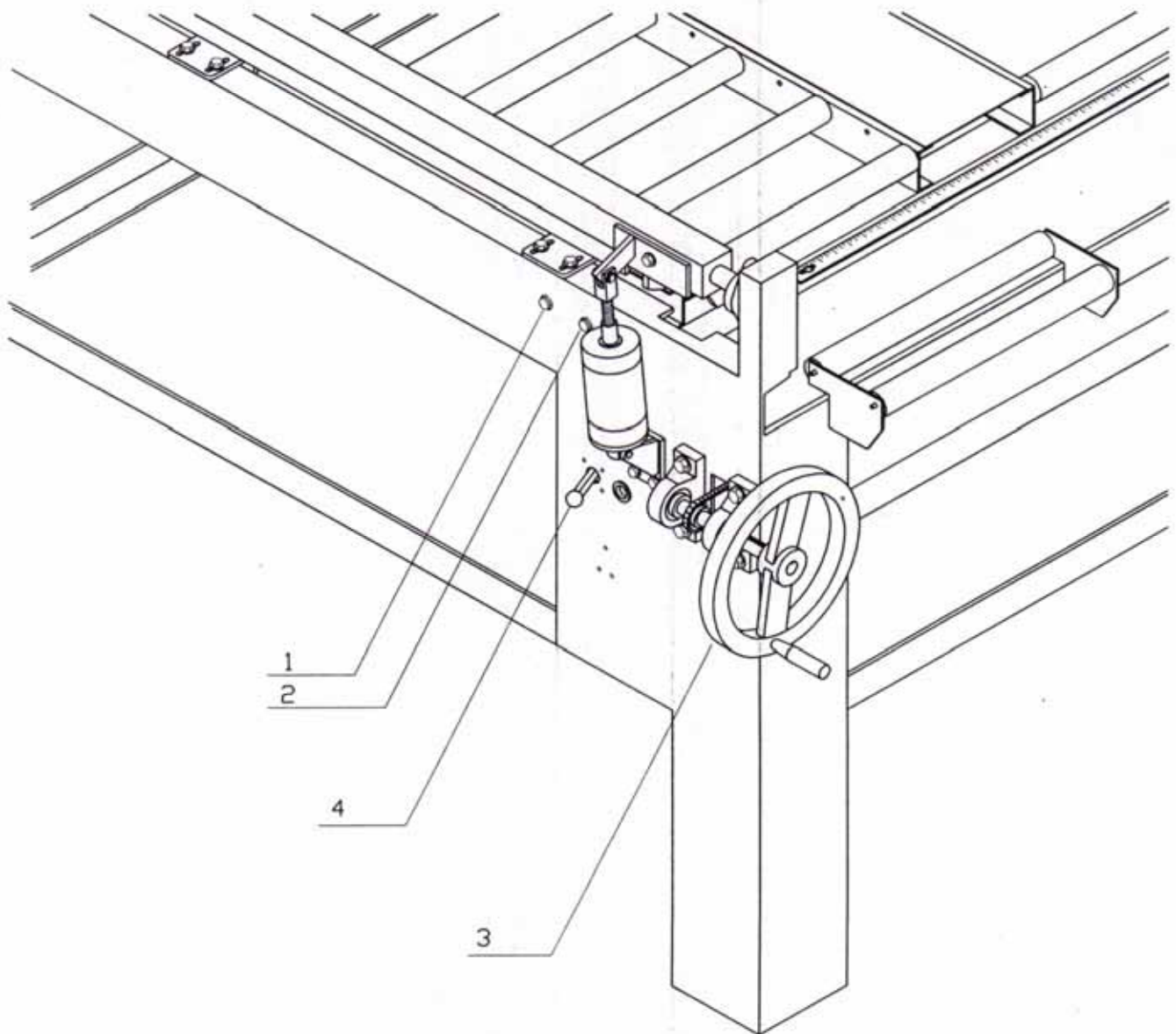
PHONE 623-934-7294 FAX 623-934-7384

INSTALLATION

1. Uncrate your 4253 Index Table and place your new machine in its preferred location.
2. Remove any plastic banding and other shipping fixtures.
3. Attach the table extensions to the infeed side of the Index Table.
4. Connect an air supply to your Index Table. (80psi)
5. Push the Tilt Up button so that the near side suspension arm is rotated up.
6. Install a proper in-feed fence on a conveyor to insure that panels will feed correctly into the Index Table. The fence line must be aligned with the near side edge of the suspension rolls and the glue spreader must be perpendicular to this fence line.
7. Align your Index Table with the conveyor on the in-feed side of the glue spreader and level the table by adjusting each leveling foot. *The pass through height of the conveyor and glue spreader should be at the height of the suspension rolls (see DIAGRAM A).*
8. Once aligned and leveled, anchor your index table to the floor.
9. Check to make sure that all controls are in working order.

CONTROLS

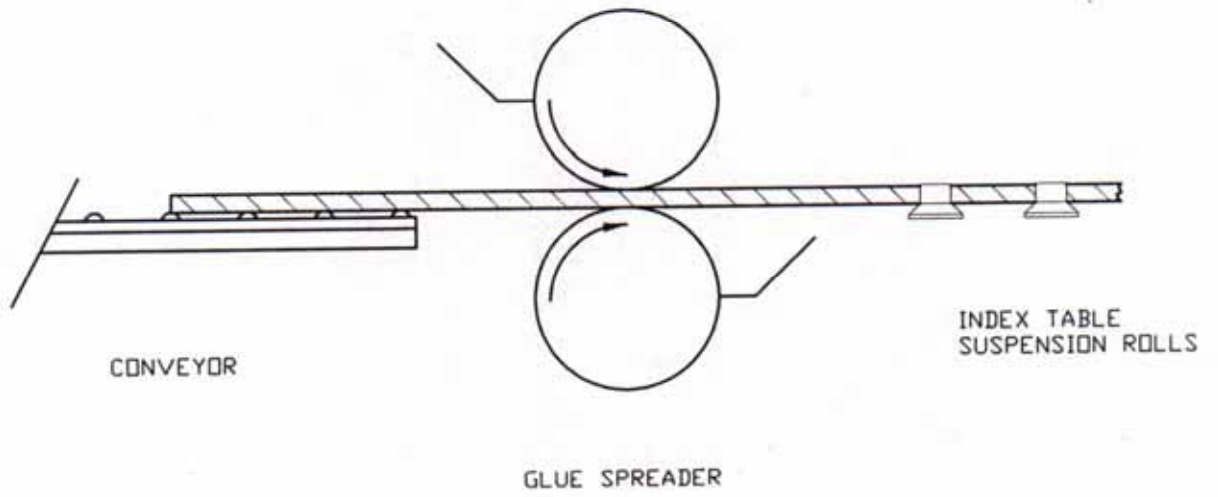
1. TILT UP: Rotates the near side suspension rail up.
2. TILT DOWN: Rotates the near side suspension rail down.
3. HAND WHEEL: Adjusts far side suspension bar for different panel widths.
4. BREAK RELEASE: Allows the far side suspension rail to move for adjusting of different panel widths.

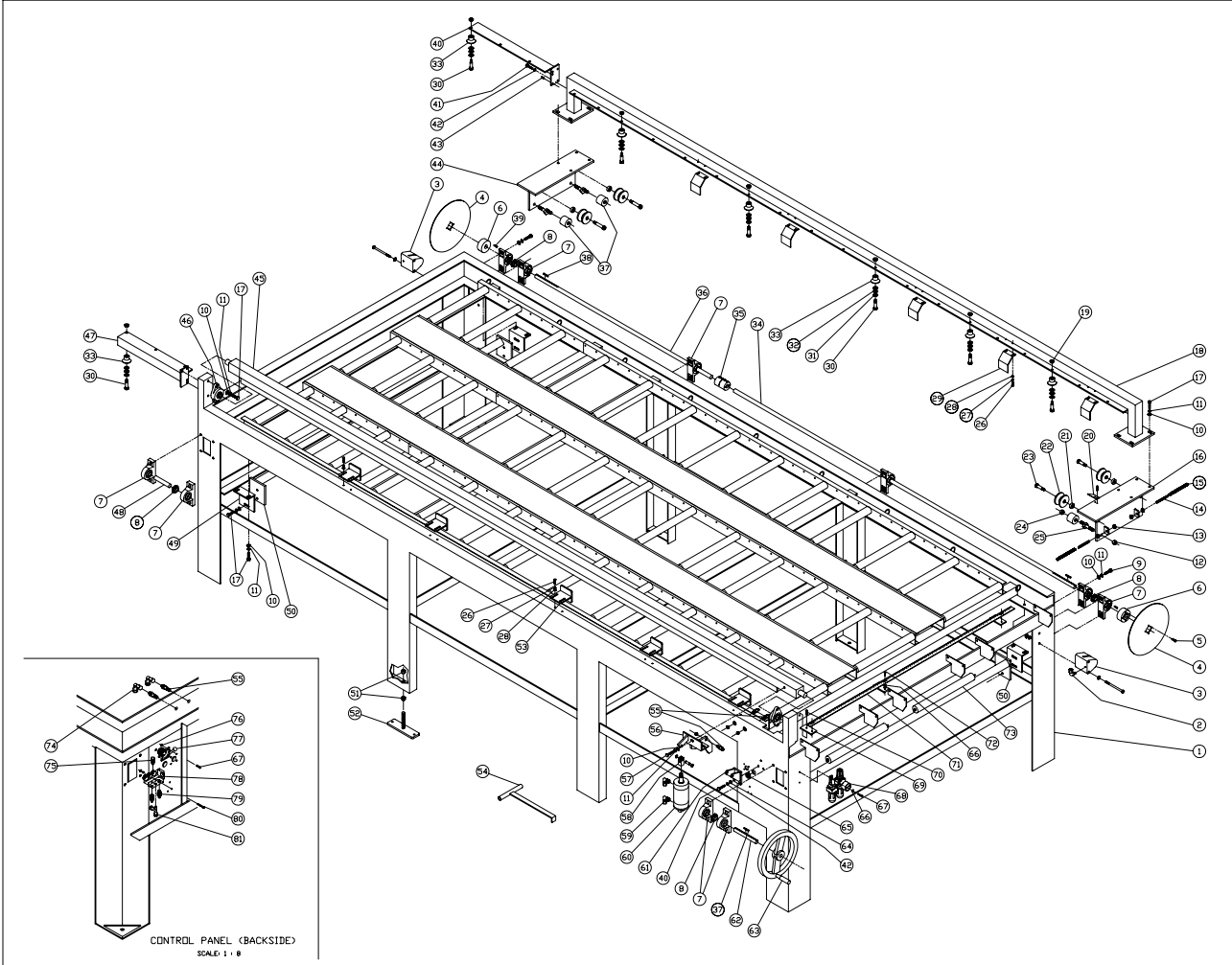


OPERATION


1. Be sure that your Index Table and other machines are lined-up properly.
2. Release the break and turn the hand wheel so that your Index Table is set at the proper width. Lock the break once the width is set.
3. Place a sheet of laminate upside down on your Index Table. *Be sure to bring the laminate against the side stops and end stops.*
4. Push your panel into your glue spreader. After passing through the glue spreader, manually pull your panel across your Index Table.
5. When the panel reaches the other end of your Index Table, it will drop and index onto the backer sheet.
6. After the panel drops, place another sheet of laminate on top of the panel.
7. Manually push the panel out of the Index Table to its desired curing station.
8. Once the panel is clear from the Index Table, press the TILT UP button to raise the suspension arm.
9. Repeat, beginning at step three (3) to continue your panel laminating operation.

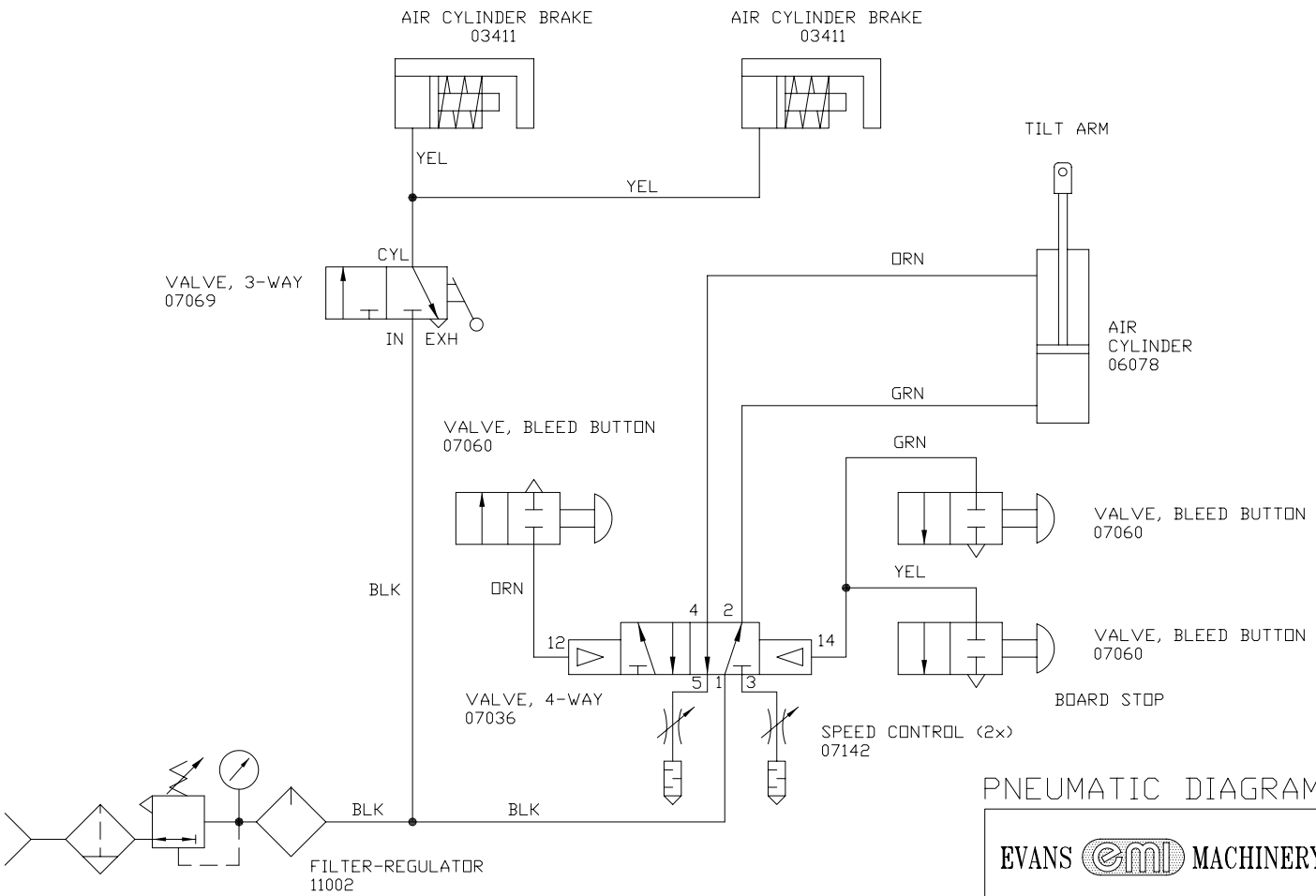
DIAGRAM A






QTY.	PART NO.	DESCRIPTION
81	2	10052 1/4 MALE RUN TEE
80	3	44007 NIP-32 x 1-1/4 F.H.M.S.
79	2	07142 VALVE, SPEED CONTROL
78	1	07036 VALVE, 4-WAY
77	1	07069 VALVE, TOSGLE
76	7	57018 NIP-32 HEX NUT
75	3	15572 1/4 MALE CONNECTOR
74	3	15542 1/4 FEMALE ELBOW
73	6	10331 16" ROLLER
72	3	44086 NIP-32 x 1-1/4 F.H.M.S.
71	1	4263-025 MODIFIED SCALE
70	3	44013 1/4-20 x 3/4 F.H.M.S.
69	3	4263-045 SCALE HOLDER
68	1	31082 FILTER REGULATOR
67	4	44003 NIP-32 x 1/2 F.H.M.S.
66	8	52001 NIP FLAT WASHER
65	1	19008 3/8 GROMMET
64	3	52004 3/8" FLAT WASHER
63	1	0161-047 HAND WHEEL
62	1	4263-018 RET'D SHAF
61	1	4263-07-00-00 AIR CYLINDER MOUNT
60	1	06078 AIR CYLINDER
59	2	15559 1/4 x 3/8 MALE ELBOW
58	1	16077 CYLINDER CLEVIS ASSEMBLY
57	3	40017 3/8-16 x 3/4 H.H.C.S.
56	1	4263-06-00-00 BOARD STOP
55	3	07060 VALVE, BLEED BUTTON
54	1	4263-09-00-00 HEXK ASSEMBLY
53	5	4279-06-00-00 PLASTIC STOP
52	8	10570 ADJUSTABLE FOOT ASSEMBLY
51	16	57016 1/2-13 HEX NUT
50	2	4263-04-00-00 CARRIAGE SUPPORT TRACK
49	4	4263-001 TRACK ANGLE
48	1	4263-019 4" SHAF
47	1	4263-03-00-00 N/5 INFEED ROLL MOUNT
46	2	03006 BEARING, 3/4" - 2-HOLE
45	1	4263-08-00-00 FRONT BAR ASSEMBLY
44	1	4263-02-00-00 CARRIAGE VELD ASSY (L/H CONFIG)
43	4	33033 1/4-20 x 1/2 SET SCREW
42	1	4263-005 5/16 LOCKWASHER
41	8	40012 5/16-18 x 3/4 H.H.C.S.
40	1	4263-05-00-00 F/5 INFEED ROLL MOUNT
39	2	367-21 3/16 KEY x 3/4
38	3	367-23 3/16 KEY x 1-1/4
37	4	4263-05-00-00 BOTTOM WHEEL ASSEMBLY
36	1	4263-021 60" SHAF
35	1	03182 CLAMP TYPE COUPLING
34	1	4263-020 106" SHAF
33	44	4263-16-00-00 TOP ROLLER
32	44	03008 1/2 THRUST BEARING
31	88	03033 1/2 THRUST WASHER
30	44	42030 1/2 x 1-1/4 SHOULDER BOLT
29	5	4263-005 BUMPER BRACKET
28	20	52003 1/4 FLAT WASHER
27	20	48005 1/4 LOCKWASHER
26	20	40001 1/4-20 x 3/4 H.H.C.S.
25	4	4263-030 ECCENTRIC BOLT
24	4	52001 1/2-20 ENDA JAM LOCKNUT
23	4	4263-016 1/2-20 SHOULDER BOLT
22	4	4263-12-00-00 CARRIAGE WHEEL
21	4	4263-016 V-ROLLER SPACER
20	1	4263-004 INDICATOR
19	44	56002 3/8-16 HEX JAM NUT
18	1	4263-02-00-00 MOVING BEAM
17	20	40018 3/8-16 x 1.0 H.H.C.S.
16	1	4263-02-00-00 CARRIAGE VELD ASSY (R/H CONFIG)
15	A/R	03399 R55 CHAIN
14	4	15707-007 CHAIN ADJUST SCREW
13	12	57019 3/8-16 HEX NUT
12	4	57009 1/2-20 ENDA LOCKNUT
11	46	48007 3/8 LOCKWASHER
10	46	52005 3/8 FLAT WASHER
9	20	40019 3/8-16 x 1-1/4 H.H.C.S.
8	4	03400 SPROCKET, #35-1B7, 3/4"
7	20	03005 FELLOW BLOC, 3/4"
6	2	4263-023 CLUTCH HUB
5	8	39011 1/4-20 x 1/2 B.H.C.S.
4	2	4263-024 BRACE PLATE
3	2	03411 BRAKE CALIPER
2	3	15527 1/4 MALE ELBOW
1	1	4263-01-00-00 MAIN FRAME ASSEMBLY
NDL. QTY.		PART NO. DESCRIPTION

EVANS  **MACHINERY, INC.**
 MADE IN U.S.A.
 REVISED JULY 06, 05
 4253 INDEX TABLE
 EXPLODED VIEW FIGURE NUMBER 4253-EXP 1



PNEUMATIC DIAGRAM

EVANS  MACHINERY, INC.	
5530N. 51ST AVE. - GLENDALE - AZ. 85301	
4253 INDEX TABLE	
DRN. G.M.C.	CHECKED
TOLERANCES UNLESS NOTED	DATE APR. 12, 99
.XXX ± 0.010	SCALE NONE
.XX/FRACTION ± 0.030	4253-P