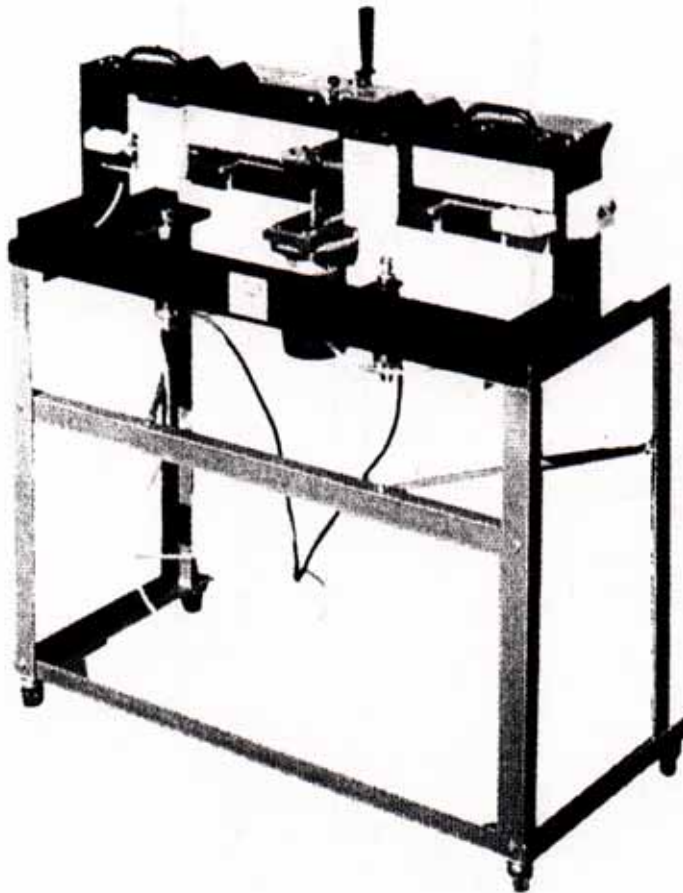


OPERATION MANUAL

7300 DRAWBOLT CUTTER



EVANS MACHINERY, INC. 5530 N. 51ST AVENUE, GLENDALE, AZ 85301 PO BOX 1406 85311
WEB www.evansmachineryinc.com e-mail sales@evansmachineryinc.com
PHONE 623-934-7294 FAX 623-934-7384

INSTALLATION

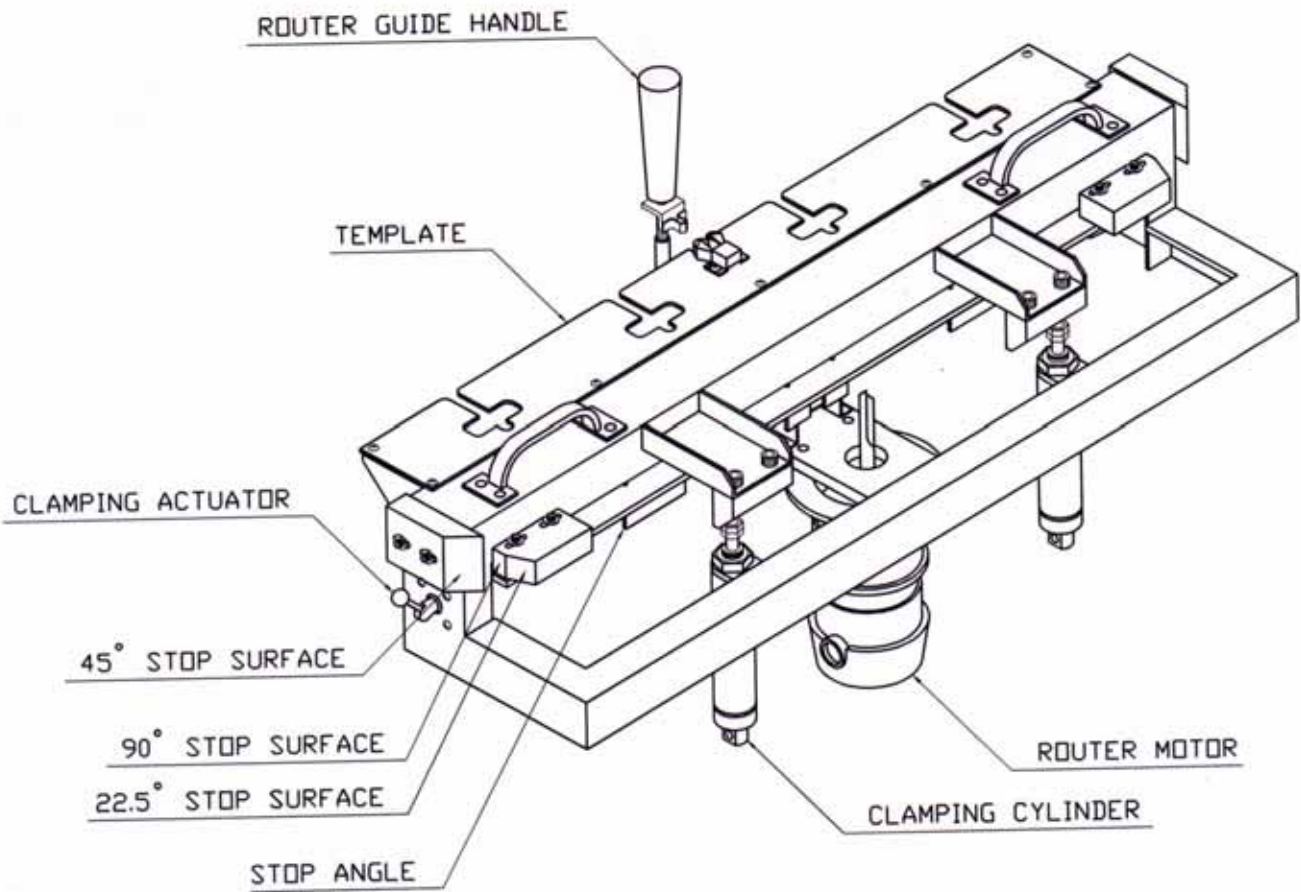
1. Uncrate your Model 7300 Drawbolt Cutter and stand. Remove any plastic banding and other shipping fixtures.
2. Set the Drawbolt Cutter onto its stand.
3. Remove the router motor and install the router bit. *A 1/2" x 3", single flute, carbide cutter is provided for you.*
4. Reinsert the router motor back into the mount. *The router motor should be adjusted so that the cut is deep enough for your drawbolt fastener to fit properly.*
5. Tighten properly before using. *See router motor manual.*

NOTE: If the router switch is on the opposite side of the operator, remove the router motor. From the point where the router motor becomes free, rotate the router motor 180 degrees, reinsert the router motor back into the mount, and readjust. The router switch should now be on the operator side.

6. Roll your new machine to its approximate location for operation.
7. Hook-up an air supply to your Drawbolt Cutter and plug into an electrical outlet.
8. Check to make sure that all controls are in working order.

7300CONTROLS

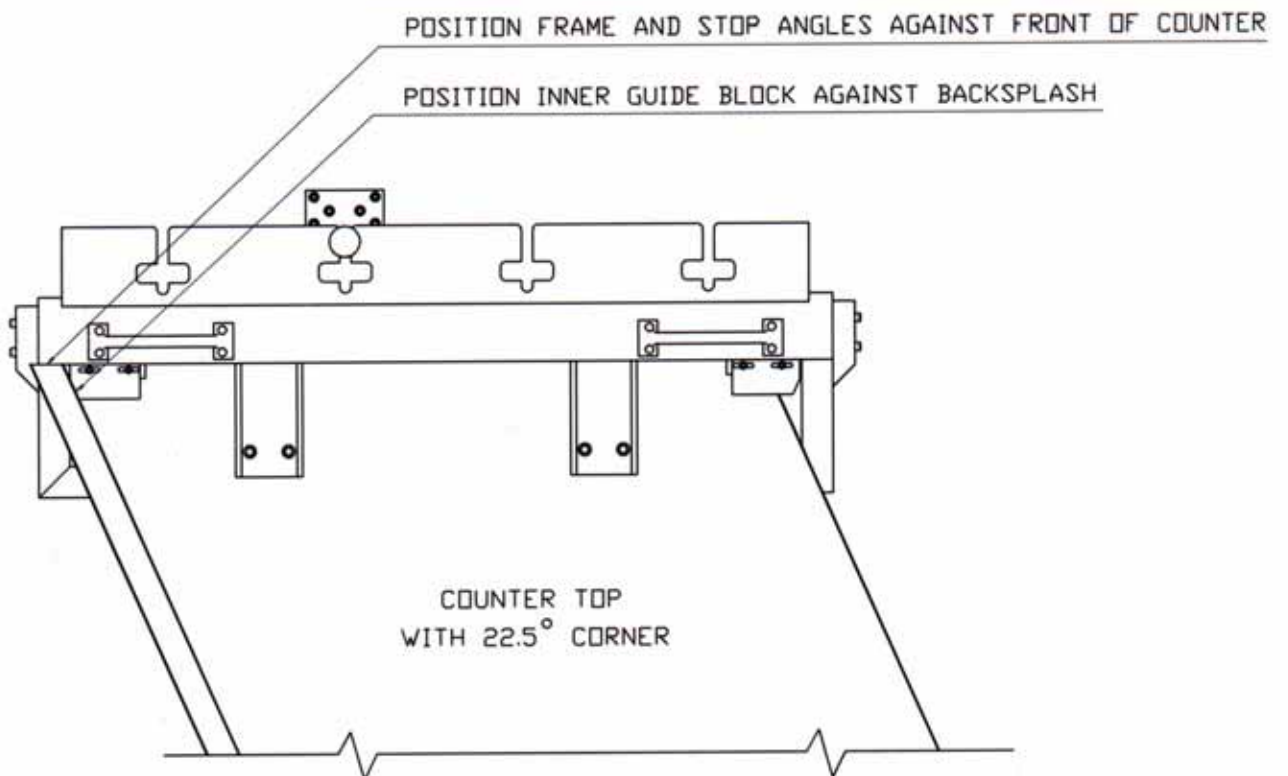
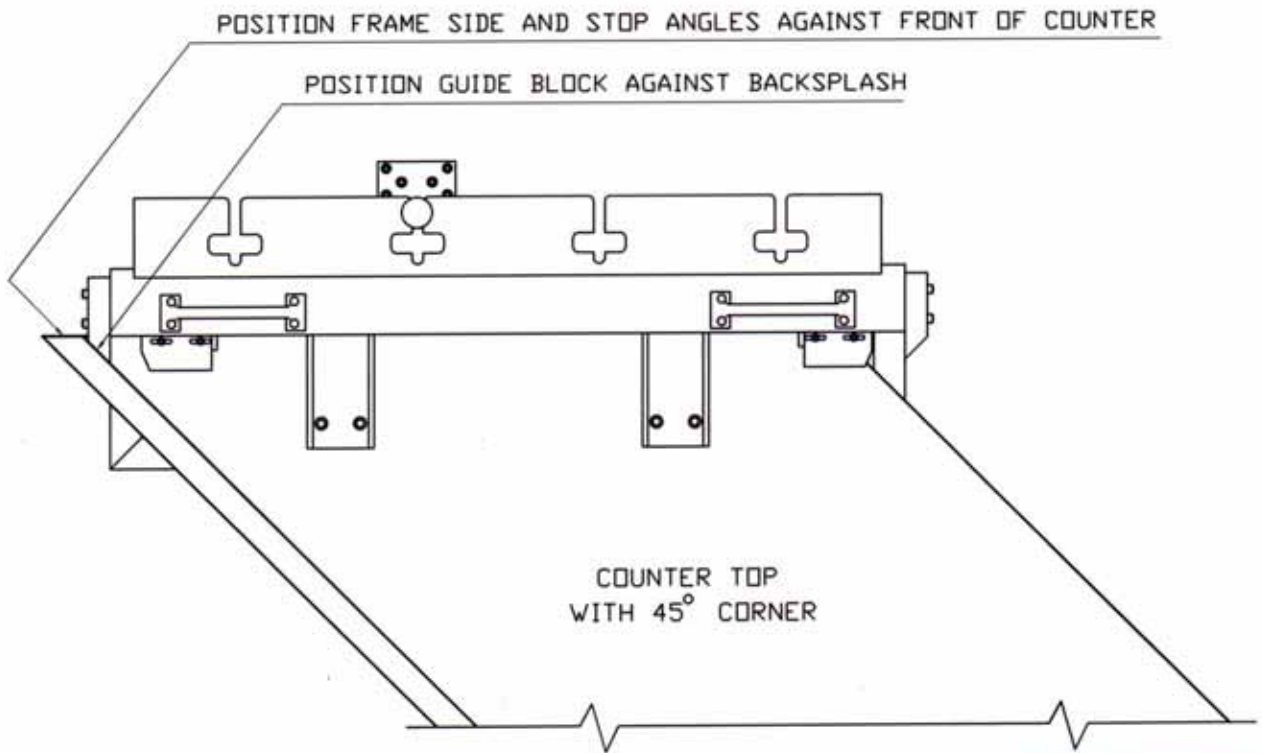
1. CLAMPING ACTUATOR: Raises and lowers the clamping cylinders.
2. ROUTER SWITCH: Starts the router motor. *Located on the router.*
3. ROUTER GUIDE HANDLE: Allows you to guide the router for proper cuts.



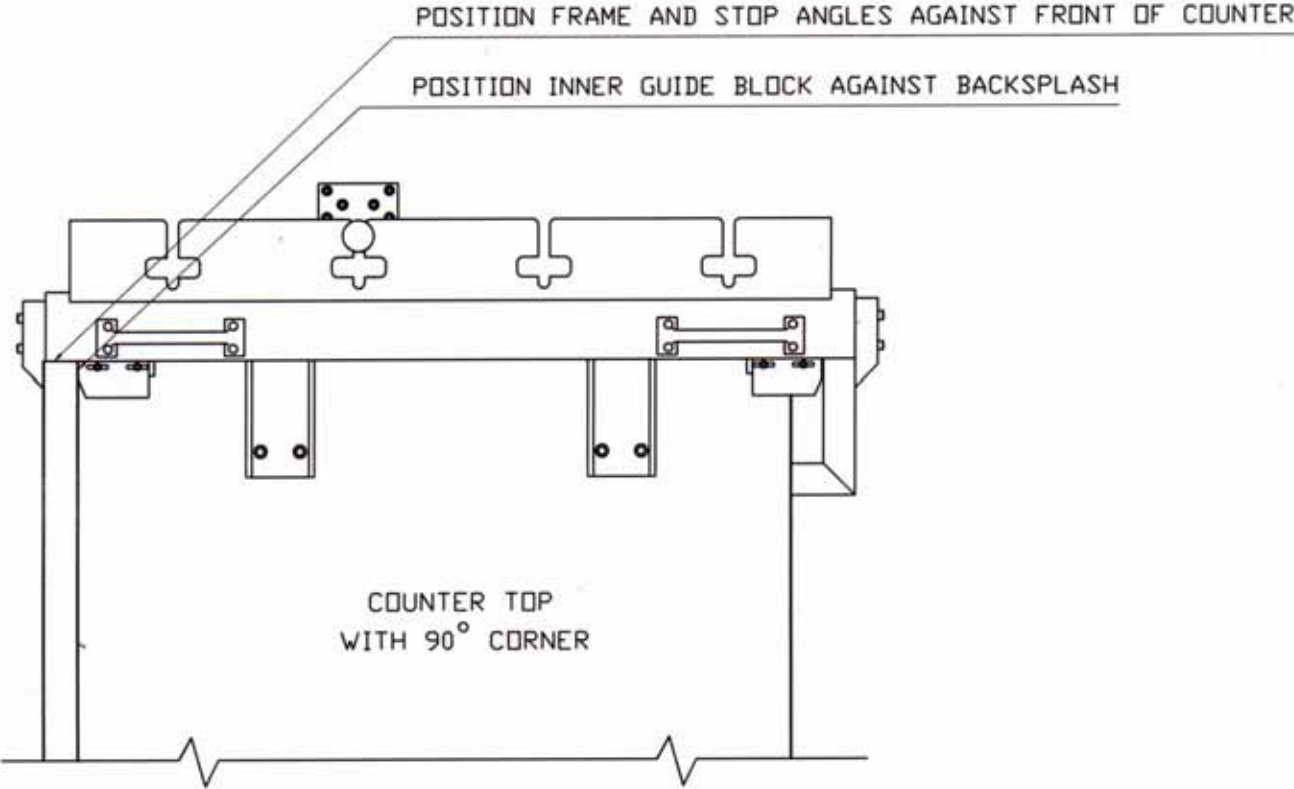
OPERATION

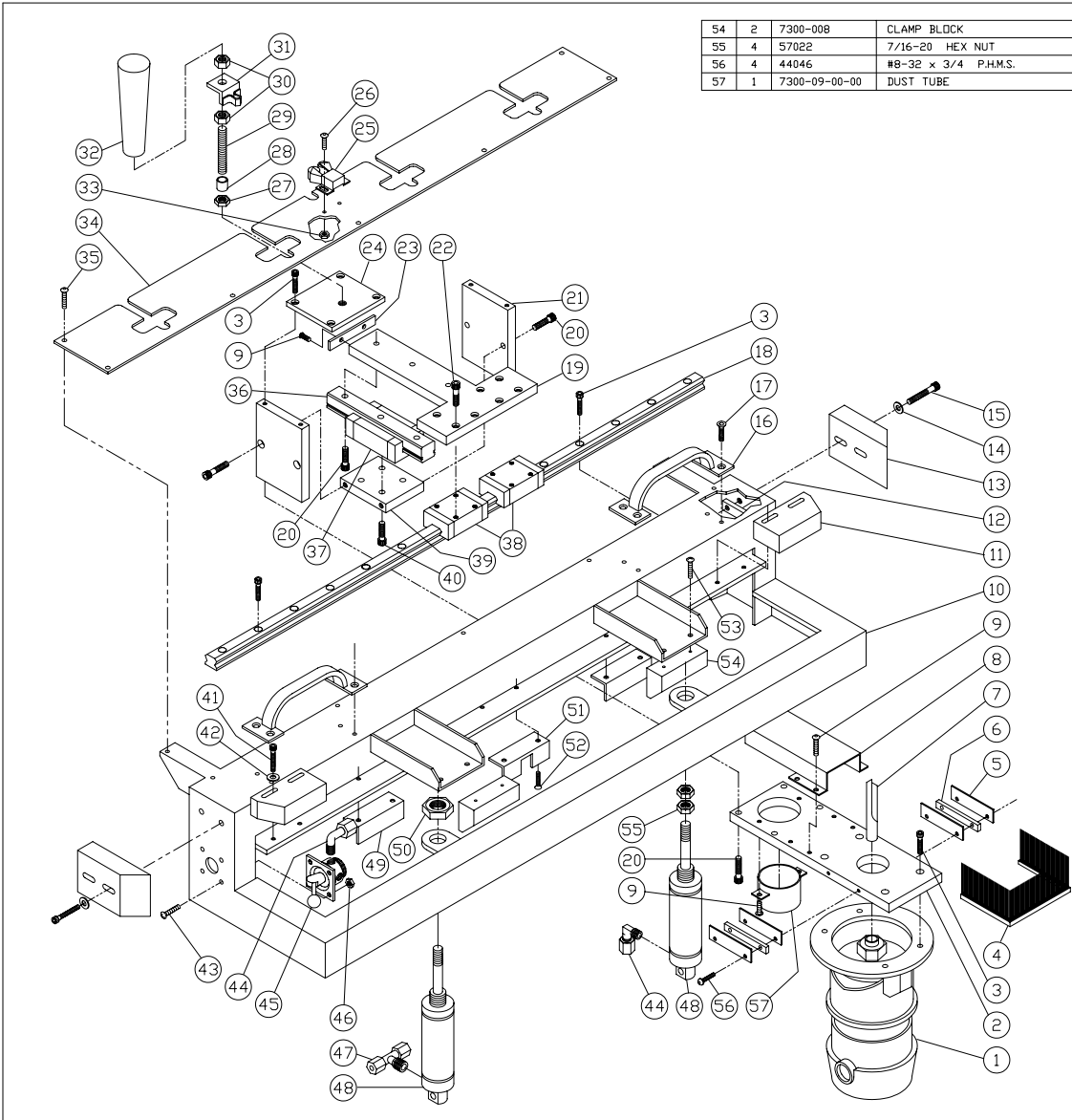
1. Roll your 7300 Drawbolt Cutter up to your countertop.
2. Align your countertop with the proper stop. *This depends on the angle of cut (22.5, 45, or 90 degree). See diagram for the correct stops to use.*
3. Once the top is in place, raise the clamping cylinders by switching the clamping actuator.
4. Turn on the router motor. *The switch is on the motor.*
5. Move the router guide handle along the template.
6. After making all the cuts, position the guide handle into the holder.
7. Turn off the router motor then lower the clamping cylinders.
8. Roll back your Drawbolt Cutter.
9. Repeat steps 1-8 for the other piece(s) of your countertop.

ANGLE DIAGRAMS




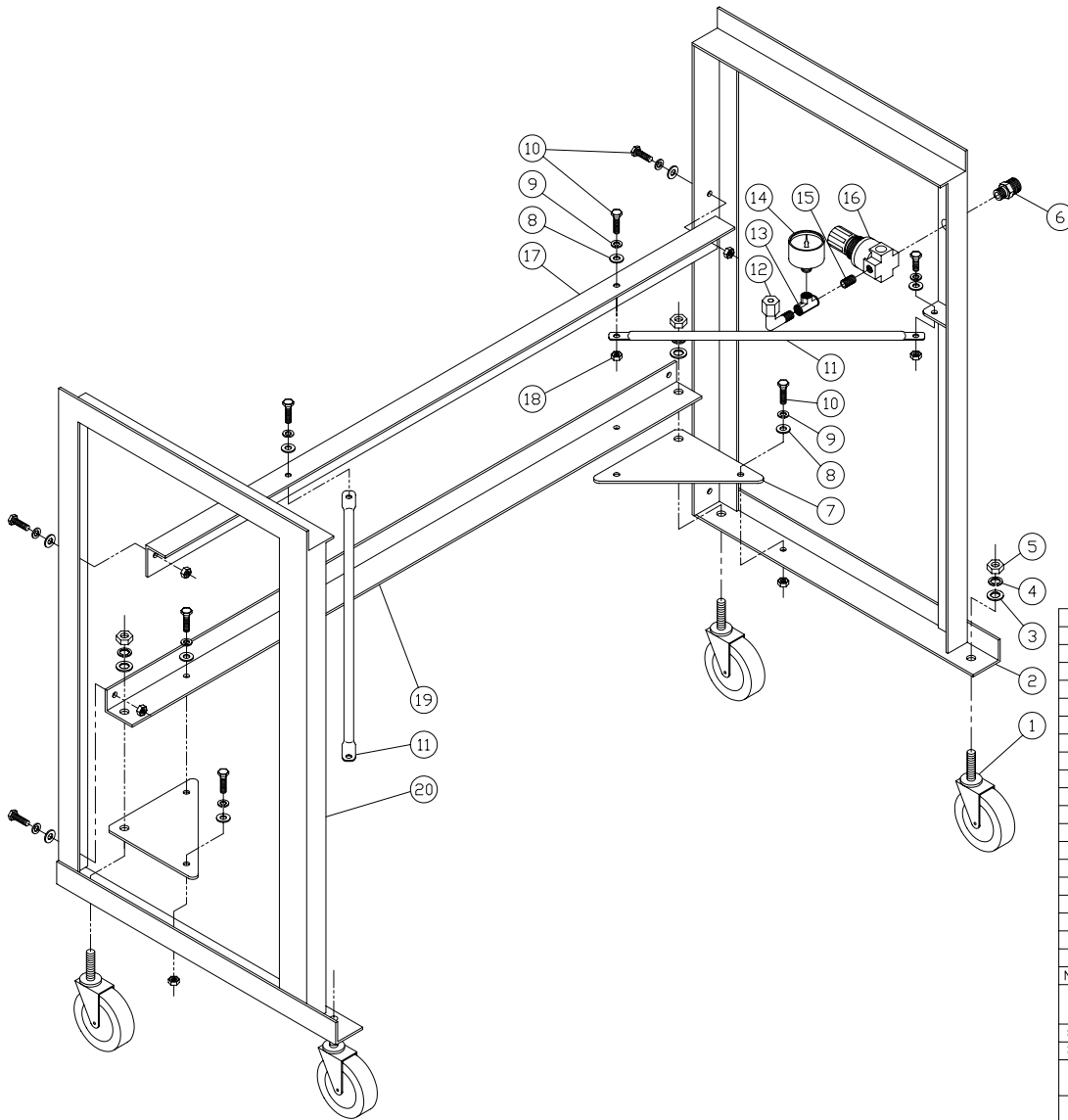
STRAIGHT-CUT DIAGRAM





54	2	7300-008	CLAMP BLOCK	53	4	62007	#10 x 1/2 P.H.S.M.S.
55	4	57022	7/16-20 HEX NUT	52	6	35010	#8-32 x 3/8 F.H.C.S.
56	4	44046	#8-32 x 3/4 P.H.M.S.	51	1	7300-023	CENTER STOP ANGLE
57	1	7300-09-00-00	DUST TUBE	50	2	56017	3/4-16 HEX JAM NUT
				49	2	7300-019	STOP ANGLE
				48	2	06026	AIR CYLINDER
				47	1	15087	MALE BRANCH TEE
				46	4	57018	#10-32 HEX NUT
				45	1	07069	VALVE
				44	3	15527	1/4 x 1/8 MALE ELBOW
				43	4	44003	#10-32 x 1/2 P.H.M.S.
				42	4	52001	#10 FLAT WASHER
				41	4	36025	#10-24 x 1-1/4 S.H.C.S.
				40	4	36123	M6 x 14 mm S.H.C.S.
				39	1	7300-028	ROUTER MID PLATE
				38	2	03660	LINEAR BEARING , 20 mm
				37	1	03662	LINEAR BEARING , 25 mm
				36	1	04097	RAIL , 25 mm , 160 mm L
				35	7	39005	#10-32 x 3/8 B.H.C.S.
				34	1	7300-001	TEMPLATE
				33	2	57005	#6-32 HEX NUT
				32	1	10272	HANDLE
				31	1	7300-04-00-00	HANDLE LOCK
				30	2	57010	3/8-16 HEX NUT
				29	1	7300-003	STYLUS STUD
				28	1	7300-004	STYLUS
				27	1	56002	3/8-16 HEX JAM NUT
				26	2	39000	#6-32 x 5/16 B.H.C.S.
				25	1	10099	DOOR CATCH
				24	1	7300-005	ROUTER TOP PLATE
				23	1	7300-016	Y-AXIS STOP
				22	8	36119	M5 x 16 mm S.H.C.S.
				21	2	7300-006	ROUTER SIDE PLATE
				20	11	36037	1/4-20 x 3/4 S.H.C.S.
				19	1	7300-002	BEARING MOUNT
				18	1	03661	RAIL , 20 mm , 820 mm L
				17	8	35046	#10-24 x 1/2 F.H.C.S.
				16	2	10320	DOOR PULL
				15	4	36041	1/4-20 x 1-1/2 S.H.C.S.
				14	4	52003	1/4 FLAT WASHER
				13	2	7300-009	GUIDE BLOCK
				12	2	7300-017	NUT PLATE
				11	2	7300-010	TOP GUIDE BLOCK
				10	1	7300-01-00-00	MAIN FRAME ASSEMBLY
				9	8	39007	#10-24 x 3/8 B.H.C.S.
				8	1	7300-026	DUST TUNNEL
				7	1	08014	ROUTER BIT , 1/2"
				6	2	7300-029	CLAMP BLOCK
				5	4	7300-024	CLAMP PLATE
				4	1	7300-027	DUST BRUSH
				3	22	36019	#10-24 x 1/2 S.H.C.S.
				2	1	7300-007	ROUTER PLATE
				1	1	7300-022	MODIFIED ROUTER , 1-1/2 HP , 220 VAC
				1	1	7300-018	MODIFIED ROUTER , 1-1/2 HP , 120 VAC

NO.	QTY.	PART NO.	DESCRIPTION
EVANS  MACHINERY, INC.			
SCALE : 1 : 4		APPROVED BY:	DRAWN BY G.M.C.
DATE : MAR 30, 99			REVISED
7300 DRAW BOLT ROUTER			DRAWING NUMBER
EXPLODED VIEW			7300-EXP 3

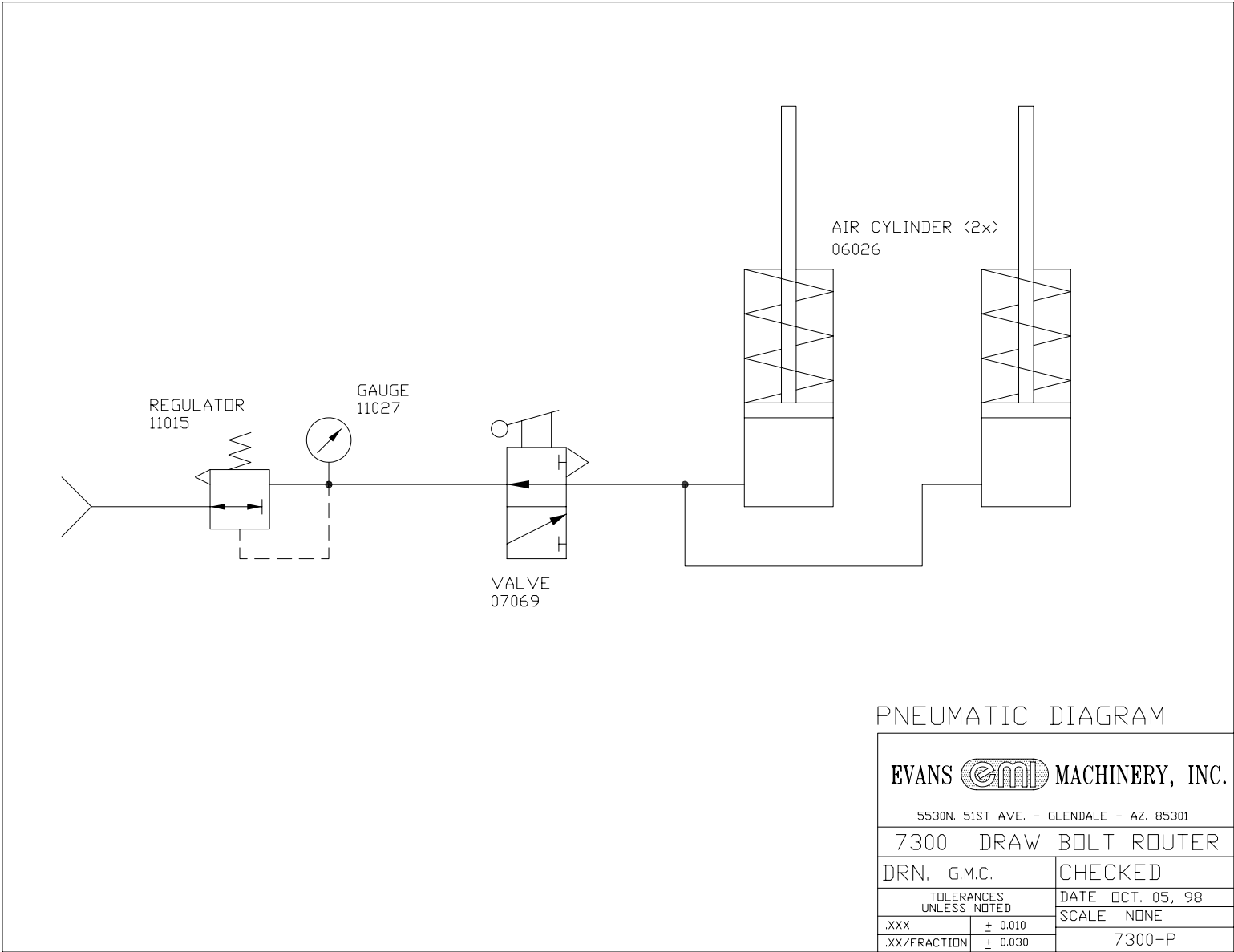


20	1	7300-05-00-00	LEFT FRAME SIDE
19	1	7300-014	BOTTOM BRACE
18	12	57008	1/4-20 HEX NUT
17	1	7300-012	TOP BRACE
16	1	11015	REGULATOR
15	1	15221	1/8 CLOSE NIPPLE
14	1	11027	GAUGE
13	1	15060	1/8 TEE
12	1	15527	1/4 x 1/8 MALE ELBOW
11	2	7300-013	SIDE BRACE
10	12	40001	1/4-20 x 3/4 H.H.C.S.
9	12	48005	1/4 LOCKWASHER
8	12	52003	1/4 FLAT WASHER
7	2	7300-015	GUSSET
6	1	15248	1/8 x 1/4 REDUCING NIPPLE
5	4	57010	3/8-16 HEX NUT
4	4	48007	3/8 LOCKWASHER
3	4	52005	3/8 FLAT WASHER
2	1	7300-06-00-00	RIGHT FRAME SIDE
1	4	10095	CASTER , 3" DIA
NO.	QTY.	PART NO.	DESCRIPTION


EVANS  MACHINERY, INC.

SCALE : 1 : 4 APPROVED BY: DRAWN BY G.M.C.
 DATE : JULY 15, 94 REVISED OCT 23, 98

DRAW BOLT ROUTER
ROUTER STAND DRAWING NUMBER
 7300-EXP 2



PNEUMATIC DIAGRAM

EVANS  MACHINERY, INC. 5530N. 51ST AVE. - GLENDALE - AZ. 85301	
7300 DRAW BOLT ROUTER	
DRN. G.M.C.	CHECKED
TOLERANCES UNLESS NOTED	DATE OCT. 05, 98
.XXX ± 0.010	SCALE NONE
.XX/FRACTION ± 0.030	7300-P